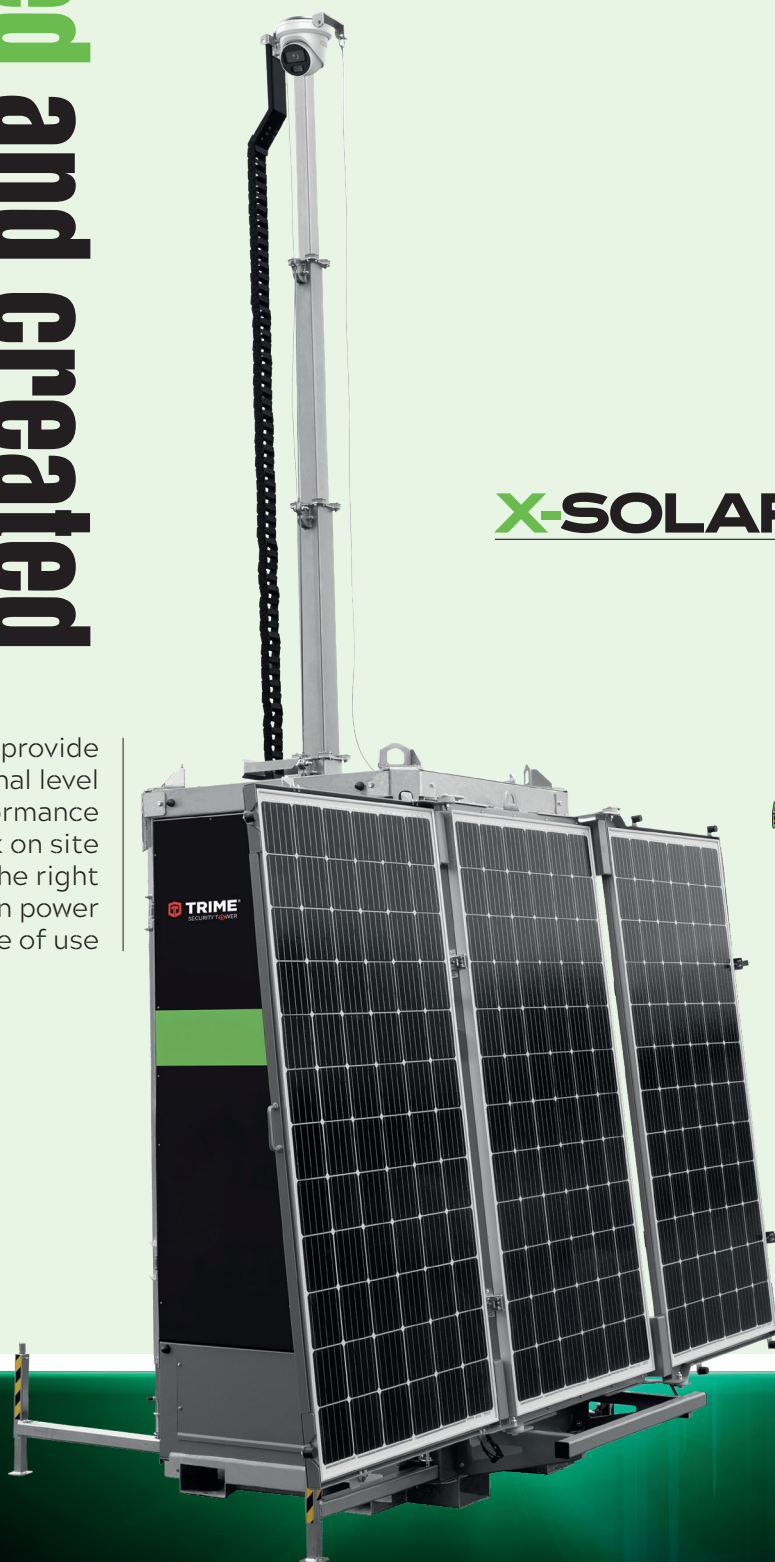


designed and created for your needs

Designed to provide an exceptional level of performance for every work on site ensuring the right balance between power and ease of use



protection security control



X-SOLAR PROTECTION



Remote construction sites

Where power supply is unstable or non-existent.



Oil & gas or mining operations

Harsh, isolated environments that demand long-term reliability.



Public and private security zones

Events, parking lots, or temporary restricted areas.



Critical infrastructure protection

Monitor pipelines, substations, dams, or telecom assets 24/7.



Military or border surveillance

Full autonomy and rugged performance for high-security locations.



Urban monitoring

Combine with sensors to measure dust, gas, weather or traffic.

more sustainable
and environmentally
friendly future



TRIME[®]
SECURITY TOWER



Your security equipment here not included

protection
security
control



ZERO
emissions

ZERO
noise



hybrid
POWERED

X-SOLAR PROTECTION

key Features

6 m galvanized manual mast

Winch auto brake – available as option Trime automatic patent mast brake

Hybrid energy pack: 2 AGM batteries + Kubota Stage V backup generator + 3 solar panels 3x360 W book opening

Up to 3 months of autonomy without refuelling (based on 24/7 operation @100W)

10 units per truck – optimized for storage and transport

Hot-dip galvanized body for all-weather use

Open head mount compatible with all major cameras and lighting systems

Manual mast lifting – no tools or electric motors required

Forklift pockets and transportable on all terrains

Silent operation when battery-only mode is active

Compact transport dimensions

Mobile surveillance
simple Reliable smart



Technical data	
Mast	
Lifting Method	Manual
Max Mast Height (m)	6
Rotation	no
Safety brake	Mechanical
Battery	
Type	AGM
Number	2
Power battery pack	24VDC – 220 Ah
Expected battery cycle	500
Engine	
Model	Kubota Z482 StageV
Speed	@1500 r.p.m.
Alternator	
Model	Linz Electric
Rated output	3,5 kVA
Frequency	50Hz
Voltage	220V
Running Time – Based on 100W of power consumption	
Running Time, only battery	45 hrs
Total running time before refilling	1840 hrs
Dimensions	
Transport dimensions (mm) LxWxH	1200x1700x2580
Dimensions in operation (mm) LxWxH	3280x2500x6000
Weight	1368 kg
Solar Panel – manual deployment	3x360W
Dimensions	
Internal – space available for user to fit electrical components inside the tower	
Length (mm)	370
Width (mm)	200
Height (mm)	470



User Benefits

True plug-and-play hybrid tower: deploy it anywhere with no grid connection

Extreme autonomy: up to 1840 hrs before refuelling thanks to hybrid tech

Silent & eco-friendly: when runs from batteries for noise-sensitive zones

Built to last: robust frame, corrosion-resistant, no compromise in harsh conditions

Flexible equipment mount: cameras, light, sensors-your choice

Low fuel consumption: thanks to Kubota engine at 1500 rpm

Quick setup: no technicians needed, mast raises manually in minutes, solar panels easy to open

Ideal for 24/7 critical infrastructure monitoring, long term remote access areas

can be customized with:



Predisposition
for customer
components

Your tech, our power:

HD CCTV cameras with remote access

Floodlights (LED Matrix or infrared)

LTE/5G or Wi-Fi router modules

GPS tracking and geofencing

Motion or environmental sensors

Alarm and alert modules

Remote access panel and software

Branding and color customization



10 units per truck
Safe packaging and loading
allowing quick unloading

Trime Security Towers are delivered as open, ready-to-use platforms, and can be customized with:

- Surveillance systems (CCTV, PTZ, IP)
- LED lights, environmental sensors, motion detectors
- Wireless connections (Wi-Fi, LTE, 5G)
- Alarms, sirens, UPS, GPS
- Custom branding with logos and company colors

Clients can integrate their own systems or rely on trusted partners.

FAQ

Frequently Asked Questions

What makes this tower "hybrid"?

It runs on battery power primarily, with solar panel and a diesel backup generator that recharges batteries when they reach 20% DOD

Is it really autonomous for 3 months?

Yes – with normal surveillance usage (approx. 100W), it can run non-stop for up to 1840 hours without refuelling.

Does it need daily maintenance?

No – it's designed for long unattended operation, ideal for remote sites.

How loud is it when running?

When operating on battery, it's completely silent. The generator is low-RPM and noise-insulated.

Can I use my own security system on it?

Yes – the mast head is universal and ready for your custom camera, sensor or light system.

How do I move it around?

Forklift pockets and compact frame make it easy to handle and transport with standard lifting gear.

Is it safe against tampering or theft?

Yes – all sensitive components are housed inside a lockable steel compartment.



TRIME®

Sales Dept. +39 0382 406 252 - www.trime.it - info@trime.it