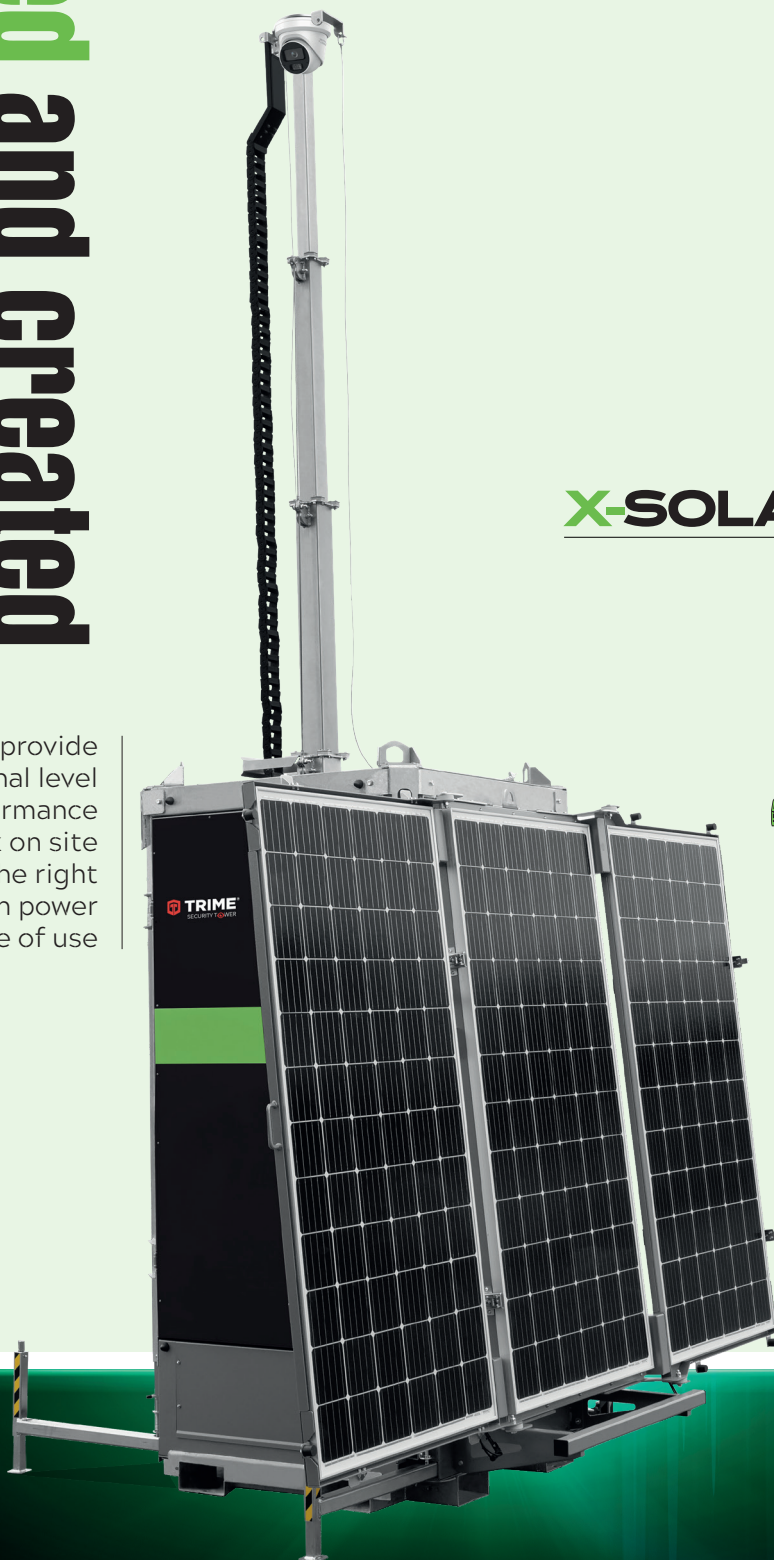


designed and created for your needs

Designed to provide an exceptional level of performance for every work on site ensuring the right balance between power and ease of use



protection security control



X-SOLAR SAFETY PRO



Remote construction sites

Where power supply is unstable or non-existent.



Oil & gas or mining operations

Harsh, isolated environments that demand long-term reliability.



Public and private security zones

Events, parking lots, or temporary restricted areas.



24/7 Critical infrastructure protection

Monitor pipelines, substations, dams, or telecom assets 24/7.



Military or border surveillance

Full autonomy and rugged performance for high-security locations.



Urban monitoring

Combine with sensors to measure dust, gas, weather or traffic.

more sustainable
and environmentally
friendly future



TRIME[®]
SECURITY TOWER



Your security equipment here not included

protection security control



ZERO emissions

ZERO noise

battery solar POWERED



Long lasting autonomous surveillance
No limits
No interruptions

User Benefits

True plug-and-play hybrid tower: deploy it anywhere with no grid connection

Silent & eco-friendly: when runs from batteries for noise-sensitive zones

Built to last: robust frame, corrosion-resistant, no compromise in harsh conditions

Flexible equipment mount: cameras, light, sensors-your choice

Quick setup: no technicians needed, mast raises manually in minutes, solar panels easy to open

Ideal for 24/7 critical infrastructure monitoring, long term remote access areas

Predisposition for customer components

Your tech, our power:

HD CCTV cameras with remote access

Floodlights (LED Matrix or infrared)

LTE/5G or Wi-Fi router modules

GPS tracking and geofencing

Motion or environmental sensors

Alarm and alert modules

Remote access panel and software

Branding and color customization



10 units per truck
Safe packaging and loading allowing quick unloading

Trime Security Towers are delivered as open, ready-to-use platforms, and can be customized with:

- Surveillance systems (CCTV, PTZ, IP)
- LED lights, environmental sensors, motion detectors
- Wireless connections (Wi-Fi, LTE, 5G)
- Alarms, sirens, UPS, GPS
- Custom branding with logos and company colors

Clients can integrate their own systems or rely on trusted partners.

X-SOLAR SAFETY PRO

Key Features

6 m galvanized manual mast

Winch auto brake - available as option Trime automatic patent mast brake

Battery solar energy pack: 4 AGM batteries 400Ah each + 3 solar panels 3x360 W book opening

10 units per truck - optimized for storage and transport

Hot-dip galvanized body for all-weather use

Open head mount compatible with all major cameras and lighting systems

Manual mast lifting - no tools or electric motors required

Forklift pockets and transportable on all terrains

Silent operation when battery-only mode is active

Mobile surveillance
Simple Reliable smart

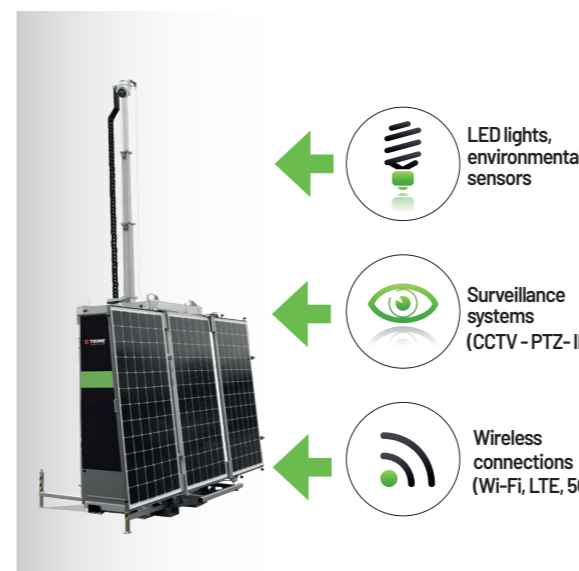
Technical data	
Mast	
Lifting Method	Manual
Max Mast Height (m)	6
Rotation	no
Safety brake	Mechanical
Battery	
Type	AGM
Number	4
Power battery pack	24VDC - 400 Ah
Expected battery cycle	500
Running Time, only battery Based on 100W of power consumption	45 hrs
Dimensions	
Transport dimensions (mm) LxWxH	1200x1700x2520
Dimensions in operation (mm) LxWxH	3280x2400x6000
Weight	1100 kg
Solar Panel - manual deployment	3x360W

Dimensions	Internal - space available for user to fit electrical components inside the tower
Length (mm)	370
Width (mm)	200
Height (mm)	470



easy handling & transportability

can be customized with:



LED lights, environmental sensors

Surveillance systems (CCTV - PTZ - IP)

Wireless connections (Wi-Fi, LTE, 5G)

FAQ

Frequently Asked Questions

What makes this tower "solar-powered"?

It operates primarily on battery power supported by three high-efficiency 360W solar panels, allowing continuous off-grid operation with renewable energy charging

Is it really autonomous for 6 months?

Yes, under normal surveillance usage (approx. 100W), the system is designed for long-term autonomous operation thanks to the combination of battery storage and solar energy generation, minimizing the need for external charging or intervention.

Does it need daily maintenance?

No, it's designed for long unattended operation, ideal for remote or difficult-to-access sites

How loud is it when running?

The system is completely silent during operation since it runs entirely on batteries and solar power, with no generator or engine involved.

Can I use my own security system on it?

Yes, the mast head is universal and ready for your custom camera, sensor, or lighting system.

How do I move it around?

Forklift pockets and a compact frame make it easy to handle and transport with standard lifting equipment.

Is it safe against tampering or theft?

Yes, all sensitive components are enclosed and protected inside a secure, lockable structure designed for outdoor and remote applications.



TRIME[®]

Sales Dept. +39 0382 406 252 - www.trime.it - info@trime.it